

**NEW**  
Imported from  
Spain

# Ocean Sil NPK

Advanced biostimulant  
formulated with Silicon,  
Seaweed and NPK



soil



foliar

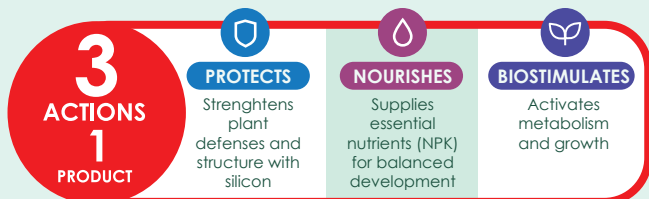
## COMPOSITION

	%w/v
Total Seaweed Extract (Ecklonia max.)	29,00
Silicon (SiO <sub>3</sub> )	12,50
Total Nitrogen (N)	6,25
Phosphorus Pentoxide (P <sub>2</sub> O <sub>5</sub> ) soluble in water	6,25
Potassium Oxide (K <sub>2</sub> O) soluble in water	8,75
Alginate Acid	0,75
Mannitol	0,25
Density: 1.25 - 1.30 g/cc	
pH: 7 - 7,5	



## CHARACTERISTICS

OCEAN SIL NPK is an advanced, highly assimilable biostimulant formulated with a balanced base of macronutrients (NPK) and enriched with 29% seaweed extract. Its high Silicon content (12.50%) reinforces plant tissues mechanically and improves the plant's response to biotic and abiotic stress conditions.



## KEY BENEFITS

- HIGHER YIELDS**: Increases production and improves the number and size of fruits/grains.
- BETTER QUALITY**: Improves size, color, taste and content of sugars and proteins.
- GREATER STRESS TOLERANCE**: Improves resistance to drought, heat, cold, salinity and pathogen attacks.
- STRONGER ROOT DEVELOPMENT**: Promotes a more extensive and active root system, optimizing absorption.
- NUTRITIONAL EFFICIENCY**: Improves efficiency in the use of nitrogen and applied nutrients.
- FASTER RECOVERY**: Helps crops recover more quickly after adverse situations.

## APPLICATIONS

**VEGETABLE CROPS** (Tomato, Pepper, Zucchini, Strawberry)

**Key Stages:**

- Transplanting
- Pre-flowering and fruit set
- Peak heat stress

**Specific Dosages:**

Soil: 5-7 L/ha every 15 days  
Foliar: 250 cc / 100 L

**FRUIT TREES, CITRUS AND OLIVE**

**Key Stages:**

- Spring → Bud break / Pre-flowering
- Summer → Fruit enlargement
- Post-harvest → Winter reserve accumulation

**Specific Dosages:**

- Soil: 8-10 L/ha → Critical irrigation periods
- Foliar: 300 cc / 100 L → Ensure thorough coverage

**POTATO**

**Key Stages:**

- Emergence → Plants at 10-15 cm
- Tuber initiation → Hook stage
- Bulking → 2-3 applications every 14 days

**Specific Dosages:**

- Soil: 7-10 L/ha
- Foliar: 250-300 cc / 100 L

**GENERAL REFERENCE DOSAGE**

- Foliar Application:** 200 - 300 cc / 100 L of water (2-3 L/ha)
- Soil Application (Fertigation):** 5 - 10 L/ha

**VINEYARD**

**Key Stages:**

- Bud break → Expanded leaves
- Flowering → Pre-flowering
- Veraison → Color change / Sugar accumulation

**Specific Dosages:**

Soil: 5-8 L/ha  
Foliar: 200-250 cc / 100 L

**CEREALS AND FIELD CROPS** (Wheat, Barley, Corn, Rice)

**Key Stages:**

- Tillering / Stem elongation → Prevents lodging
- Flag leaf stage
- Grain filling

**Specific Dosages:**

- Soil: 5 L/ha → Only in technified systems
- Foliar: 2-3 L/ha → Full coverage

**BERRIES** (Blueberry, Raspberry, Blackberry)

**Key Stages:**

- Post-transplant / Spring reactivation
- Pre-flowering and fruit set
- Fruit development → Post-harvest firmness

**Specific Dosages:**

Soil: 5-8 L/ha  
Foliar: 200-250 cc / 100 L

**KEY HANDLING RECOMMENDATIONS**

- SHAKE the container thoroughly before dosing.
- AVOID application during hot hours (apply early morning or evening).
- COMPATIBILITY: Perform a prior compatibility test if mixed with strong acids or alkalis.
- AVOID spraying open flowers if pollinators are active (Berries).



IMPORTED FROM EU

